

Crowsnest Pass

Doors Open & Heritage Festival

July 30 to August 2, 2010



Discover Crowsnest Heritage

Welcome to the Historic Crowsnest Pass

Welcome everyone to the 5th annual Crowsnest Pass Doors Open and Heritage Festival, taking place over the Heritage Day Weekend from July 30 to August 2, 2010.

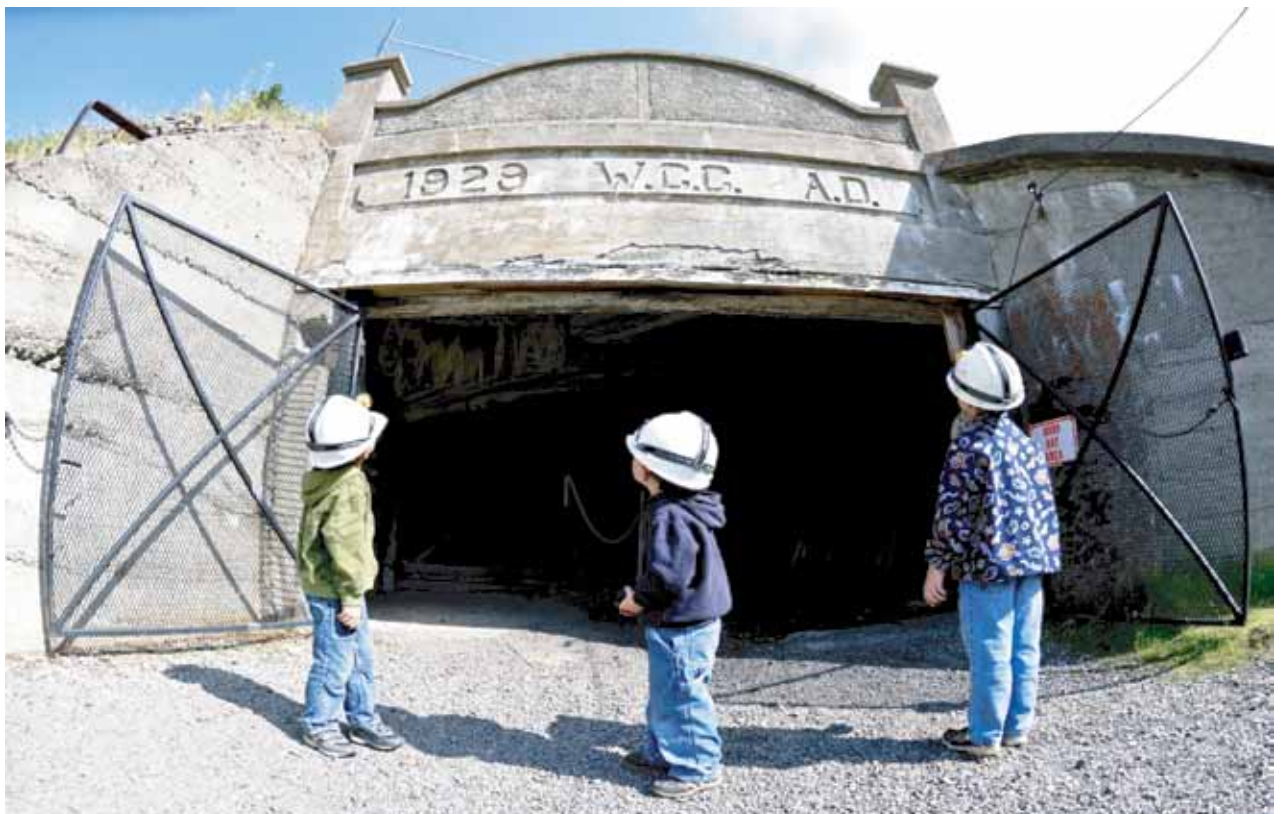
Last year's festival was a great success, offering more than 34 activities to over 7,400 visitors. This year we are hoping to exceed your expectations with a variety of events that will be a journey of discovery as to why this small corner of Alberta is one of the most fascinating places to visit.

This year's program continues our committee's diligent pursuit of introducing you to the unique history of the Crowsnest Pass. Look for some new and exciting activities that will be taking place this year; such as the 100th anniversary celebration of Flumerfelt Park and the numerous activities taking place at the Frank Slide Centre to celebrate its 25th anniversary and the 100th anniversary of the Bellevue Underground Mine Explosion.

You won't want to miss your favorite annual activities that include: the Crowsnest Country Market at Flumerfelt Park, Teddy Bear's Picnic at the Crowsnest Museum, Miners' Memorial at the Bellevue Underground Mine, Movie by Starlight, our wonderful Natural Heritage Programs, Antique Appraisals, guided building tours and walks, and the amazing art and photo exhibit.

Please enjoy all that the beautiful and historic Crowsnest Pass has to offer.

Fred Bradley
Chairperson



A trio of young explorers prepare for a tour of the Bellevue Underground Mine

Highlights for 2010

- | | |
|--|--|
| 25th Anniversary of Frank Slide Centre | • Crowsnest Photography Excursion |
| Country Market | • Guided Bird & Flower Walks |
| Teddy Bear Picnic | • Quilters Fair |
| Historic Building Tours | • Art Exhibit |
| 100th anniversary of the Bellevue Mine Explosion | • Movie by Starlight |
| Underground Mine Tours | • Crowsnest Photo Exhibit |
| Miners' Memorial | • Children's Activities |
| Teck Coal Mine Rescue Demo | • Guided Bus Tours |
| Mine Lamp Demonstration | • Guided Walking Tours |
| Mine Explosion Simulation | • 100th Anniversary of Flumerfelt Park |
| Antique Appraisals | • Chinook Lake Information session |



**Downtown Coleman
National Historic Site**
www.crowsnestmuseum.ca
403-563-5434



**Bellevue Underground
Mine Tours**
www.bellevueundergroundmine.org
403-564-4700



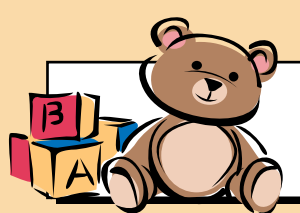
Hillcrest Cemetery
www.frankslide.com
403-562-7388



**Leitch Collieries
Provincial Historic Site**
www.frankslide.com
403-562-7388



Crowsnest Country Market
www.colemancommunitysociety.ca
403-563-5408



**Crowsnest Museum
Teddy Bear's Picnic**
www.crowsnestmuseum.ca
403-563-5434



**Alberta Provincial
Police Building**
403-563-5434

INSIDE:

- Schedule of events
- Maps of area
- Participation prizes
- Tales of the Crowsnest Pass
- Sponsors and Partners



The Bellevue Mine Disaster

The Bellevue Mine was owned by West Canadian Collieries of Lille, France. In most years it was a highly profitable venture. Production in 1910 was 336,334 tons, up from 126,000 tons in 1908. In March 1910, James Burke, secretary to the UMWA local, complained to Mr. Stirling, the chief mine inspector, about gas and poor ventilation. Inspector Heathcoate confirmed the presence of methane and ordered the company to improve ventilation. Months later, problems persisted.

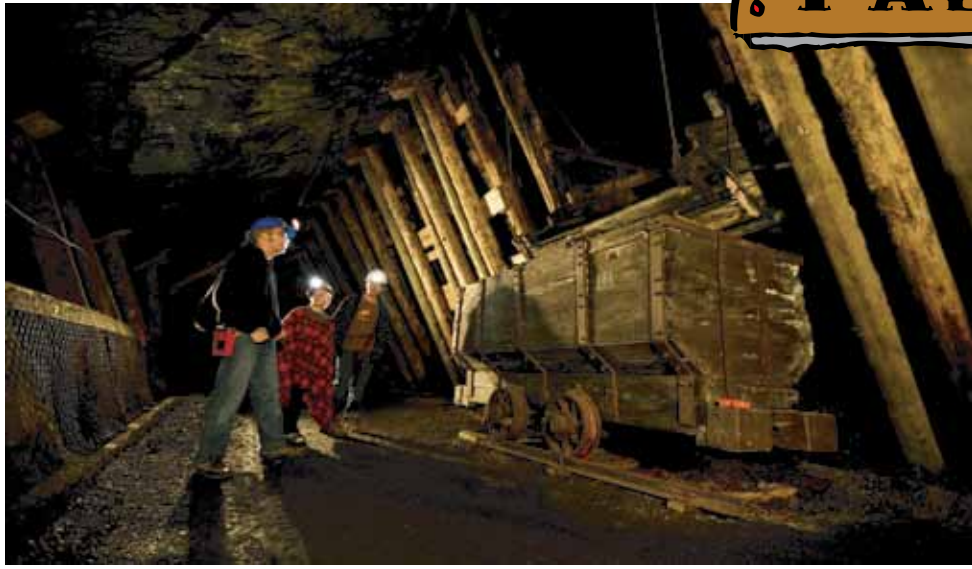
On December 9, 1910, at 4:00 p.m., over 200 workers exited the mine and 47 men went in for the afternoon shift. At 7:00 p.m., a powerful explosion rocked the mine. The exploding methane quickly consumed oxygen and pushed good air out of the mine. The outside fan was knocked out. Deadly afterdamp (carbon monoxide) filled the mine. While most men survived the blast suffering concussions and abrasions, they soon began to die of carbon monoxide poisoning. Outside, the shrill blast of the mine whistle signalled a disaster. People rushed from their homes and rescue work began.

Alberta mines did not have rescue teams and equipment in 1910. A wise BC government, however, had established a provincial mine rescue system. A train was quickly commissioned at Fernie by the Crows Nest Pass Coal Company and the CPR. Soon it was racing toward Alberta, picking up personnel at Hosmer and Michel along the way. Thirteen trained dragmen (miners specially trained in underground rescues) boarded the train.

Prior to the train's arrival, rescue work was dreadful. Six men had been found alive and 22 were found dead or dying. Dr. MacKenzie of Bellevue, Inspector Heathcoate and Manager Powell worked feverishly. All three were overcome by afterdamp and nearly died. Other rescuers were very ill as well. Inside the mine, at 84 chute, 19 men, desperate and barely conscious, had gathered at the air locomotive charging station. They had broken off a piece of pipe and were surviving on the escaping compressed air. Outside, a mine official, worried about fires and damage to property, shut down the main compressor station. All 19 men died at that station. They were found expired in a close huddle. At 124 chute another group of men were barely surviving in somewhat better air. They had built a "stopping" that they were able to huddle behind.

At 2:00 a.m., the rescue train arrived. The draegerman found a state of panic and disorganization. They quickly took control of the situation and entered the mine wearing two-hour apparatuses. Some were also overcome by carbon monoxide poisoning. Fred Alderson of Hosmer and Inspector Strachan of Fernie reached the survivors at 124 chute and started to bring men out one at a time back to 84 chute, where good air now existed. Outside, word was received that members of the rescue team were lost. A "forlorn hope" team was sent in, led by Mr. Evans and Mr. Huby of Hosmer. They were able to rescue the barely conscious men from 124 chute, but found Alderson and the miner he tried to rescue dead.

Altogether, 30 miners died, along with one draegerman. The mine was shut down immediately. An inquest found the company negligent but also blamed the miners for shortcutting the provisions of the Mines Act. No one was charged or fined, but the company was ordered to correct the ventilation system before the mine could reopen. Before this could be done, another explosion occurred, in January 1911. It



Don a miner's helmet and experience life as an underground coal miner first hand.

was by far the worst blast, though fortunately no one was in the mine. It was blamed on falling roof rock creating sparks, which ignited methane gas. By April 1911, ventilation was greatly improved. Repairs to the mine and a miners' strike in April kept the mine closed for almost a year after the explosion.

Soon rescue stations sprouted up in each of Alberta's mining districts. Crowsnest Pass Rescue Station #1 operated out of a converted railway passenger car. It was based in Blairmore and could be rapidly transported to any mine in the Pass. It is a tragedy that 31 men had to die in the Bellevue Mine before the Province saw the need for mine rescue services. In all, 67 men were killed in the Bellevue Mine from 1903 to 1961.

For more information on the Bellevue Mine Disaster, participate in the activities taking place on Sunday, August 1st at the Bellevue Underground Mine. Along with a Miners' Memorial there will be: a mine rescue demonstration, a safety lamp demonstration, a simulated mine explosion, a historic photo exhibit, an interactive program for kids entitled, "Pulling the Pillars", Antique Appraisals with Sheldon Smithens of the Canadian Antique Roadshow and the Bellecrest Quilters Fair.

The Changing Times of the Polish Hall

In the early 20th century, many people of Polish decent came to western Canada, with the largest concentration settling in the eastern portion of the town of Coleman known as Bushtown. Work in the mines paid well but with periodic strikes and other work stoppages, mining was a challenging way to make a living. Seeking the solace of their compatriots, as early as 1910 the Polish community had constructed a small wood house for meetings and family parties. The Polish Brotherly Aid Society was formed in December of 1916. The Society aimed to protect its members and their families from the harsh economic consequences of the strikes, injuries and death that were commonplace in the mining industry—membership in the Society meant sick pay and death benefits were taken care of.

In 1927, the Society built this more substantial hall as a focal point for the Polish communities of not just Coleman, but Bellevue, Hillcrest, Blairmore and Frank as well. This was the first Polish Hall built in Alberta and cost the group \$5000 to construct. A double lot in the Bushtown area of Coleman, not far south of the railway tracks, was chosen for the hall site. The Hall was made of recycled brick and lumber, and was completed entirely by community volunteers. It featured a wooden dance floor, a stage and a stained glass window above the entrance, with a series of murals inside depicting Polish castles and forests and the Rocky Mountains. A few years later the exterior of the hall was covered in stucco and painted. A front foyer was added, perhaps around 1930.

For the next several decades, the Coleman Polish Hall was an important centre of social life in the town—the site of a community library and charity



Photo: courtesy Crowsnest Musum

work, orchestra practices and performances, a drama group and choir, the clubhouse for the Polish hockey team, society meetings, Polish school and other types of lessons for the community's kids, adult educational lectures, wedding dances and suppers, and famous parties known as "smokers."

In 1947, a Coleman branch of the Polish Combatants' Association (PCA) was formed and in the early 1950s, it took over ownership and authority of the Polish Hall. Within the next few decades, the PCA's membership began to falter, and the Ladies' Auxiliary of the PCA kept the hall operational. Gradually, the Polish Hall became a community hall, but a small group known as the Polish Hall Society was formed to maintain its cultural foundations.

The Polish Hall has recently been re-designated as a provincial historic resource. It continues to be an important site for community activities taking place in Coleman today.

To learn more about the history of the Polish Hall, join us for the launch event for Crowsnest Pass Doors Open and Heritage Festival, on Friday, July 30 from 7:00 - 9:00 pm. Guest speaker Dr. Laurel Halladay, will give a presentation: "Getting By and Getting Along: Ethnicity, Class and Community Cohesion in the Early Twentieth-Century Crowsnest Pass."



SCHEDULE OF EVENTS

Friday, July 30, 2010

Polish Hall - Launch Event

1406 - 82 St., Coleman
7:00 - 9:00 pm
Contact: Cathy, 403-562-7388

Join us at the Polish Hall for music, food and our special guest speaker Dr. Laurel Halladay will present *Getting By and Getting Along: Ethnicity, Class and Community Cohesion in the Early Twentieth-Century Crowsnest Pass*. A common recollection and point of pride in several oral histories of the Crowsnest Pass is that, despite the great variety of ethnic groups in the region prior to the post-Second World War downturn in markets for coal, there was no racial conflict between, for example, the Pass' Italians, Poles, Czechs, Slovaks, Irish, Dutch, Ukrainian, Chinese, and French. Senior residents of the Pass in general seem to believe that clashes between the various nationalities that would have compromised the quality of community life was exceptionally rare. As will be seen, racial disharmony did in fact exist but animosities were more usually turned toward mine owners and management, which resulted in numerous strikes and sometimes violence.



Cost: Free

Historic Blairmore Courthouse Guided Tours



NIT Inter-Cultural Campus,
13437 - 20th Ave., Blairmore
10:00 am - 4:00 pm
Contact: 403-562-7704

The Blairmore Courthouse was constructed in 1923 to serve as a court, police and jail facility for the

Crowsnest Pass. Designated as a Provincial Historic Resource in 1993, the Blairmore Courthouse is currently owned and operated by the School Foundation of Nippon Institute of Technology. The facility has been meticulously restored to its 1923 state and now functions as an educational campus. Some areas may be restricted due to classes.

Cost: Free

Union Bank

Crowsnest Pass Chamber of Commerce & Crowsnest Conservation Society,
12707 - 20th Ave., Blairmore

1:00 - 4:00 pm Fri - Sat
Contact: 403-562-7108

The Union Bank of Canada moved into this building in 1923. In 1925 the Union and Royal Banks merged as the Royal Bank of Canada. The building now houses the Crowsnest Pass Chamber of Commerce and Crowsnest Conservation Society.



Cost: Free

Lethbridge Brewing and Malting Company

Royal LePage Real Estate Office
13055 - 20th Avenue, Blairmore
1:00 - 4:00 pm Fri - Sat
Contact: 403-562-2848

Completed in 1907, the finest brands of cigars were sold along with domestic and imported wines and liquors. A portion of the west stone wall has been restored and the building is now the office for Royal LePage South Country Real Estate.



Cost: Free

Friday to Monday Events

Historic Blairmore Walking Tours

Cosmopolitan Hotel, 13001-20 Ave., Blairmore
12:00 Noon - 10:00 pm

Take a stroll along historic main street Blairmore. Pick up your self-guided walking tour map at the Cosmopolitan Hotel on Main Street Blairmore.

Cost: Free

Frank Slide Interpretive Centre 25th Anniversary

1.5 km off Hwy #3, Crowsnest Pass

10:00 am - 5:00 pm
Contact: 403-562-7388
www.frankslide.com

Enjoy the four new levels of interactive exhibits highlighting the amazing 1903 Frank Slide. Daily interpretive programming.



Join us this weekend as we celebrate the 25th anniversary of the Centre. Numerous special exhibits and presentations throughout the weekend will highlight the best of the programs that we have offered over our 25 years.

Cost: Admission

Guided Tours of Leitch Collieries Provincial Historic Site

Hwy #3 at east end of Crowsnest Pass

11:00 am & 2:00 pm
Contact: 403-562-7388



Step back in time to the coal mining era in the Crowsnest Pass. Tour the remains of the surface workings of Leitch Collieries, which operated from 1906-1915.

Cost: Free

The Crowsline Art Studio & Birdhouse Walkway

2401 - 63 St., Coleman

Times: Fri., Sun. & Mon. noon - 9:00pm
Saturday 7:00 pm - 9:00 pm
Contact: 403-562-7223
birdgirl@yvonnemartinez.com

Our 'Crowsline Art Studio,' is located on an acreage within Coleman. We are artists that specialize in metal jewelry and watercolour paintings. Of interest is our Woodland walkway (approx. 30 minutes), of over 40 homemade and unusual birdhouses taking one to a view of Canada's best mountain ranges.

Cost: Free

Historic Bellevue Walking Tours and Photo Exhibit

Tour begins at Old Dairy Ice Cream Shoppe, Main Street, Bellevue
11:00 am - 10:00 pm
Contact: 403-564-4111

Enjoy an historic photo exhibit in the windows of each of the buildings. Grab an ice-cream and take this historic self-guided walking tour along main street Bellevue.

Cost: Free

Historic Frank Walking Tours

Allied Arts Building
14737 - Hwy #3, Frank
Contact: 403-562-2218

Pick up a free brochure at the Public Art Gallery in Frank for this exciting tour. Gallery hours: Fri. & Sat. 10:00 am - 4:00 pm, Sun. & Mon. 1:00 pm - 4:00 pm.

Cost: Free

Crowsnest Pass Public Art Gallery Exhibit and Historic Tour

Allied Arts Building, 14737 - Hwy #3 Frank

10:00 am - 4:00 pm, Fri. & Sat., 1:00 pm - 4:00 pm, Sun. & Mon.
Contact: 403-562-2218

Enjoy a juried show of local and area artists. Browse through the history of the building and enjoy some of the historic Gushul photos.

Cost: Free



Bellevue Underground Mine

Access off Main Street Bellevue, 213 Street

Contact: 403-564-4700

www.bellevueundergroundmine.org

Daily half-hour tours: First tour leaves at 10:00 am, Last tour leaves at 5:30 pm. Don a miner's helmet and experience life as an underground coal miner first hand.

Cost: Admission.

Holy Ghost Church

Blackbird Coffee House, 7914 - 20th Ave., Coleman

8:00 am - 8:00 pm

Contact: 403-562-8222

The church was built in 1905 with the land being donated by the International Coal and Coke Company. The ceiling painting was done circa 1916 by a French artist who had studied in Montreal. There will be live entertainment throughout the weekend.

Cost: Free tours - admission for entertainment

Crowsnest Museum

7701 - 18 Ave., Coleman

9:00 am - 5:00 pm, Fri - Sun

Contact: 403-563-5434

www.crowsnestmuseum.ca

Take a look into the unique, rich and vibrant history from

the days of prohibition and rum running to underground mining. Located in downtown Coleman National Historic Site the museum is home to over 60,000 artifacts with an estimated 25,000 on display in the six themed galleries and numerous exhibits and displays.

Cost: Admission - Museum closed on Monday



Hike the Historic Miner's Path & Crowsnest Pass Cemetery Walk

Brochures are available at the Crowsnest Museum

9 am - 5 pm, Fri - Sun.

A stairway over the creek, which leads to the historic McGillivray mine site, begins at Flumerfelt Park and ends at a 12 foot waterfall. An easy 20 minute, self-guided hike. New this year is the self-guided Cemetery Walk, explore the unique cemeteries of the Crowsnest Pass.

Cost: Free

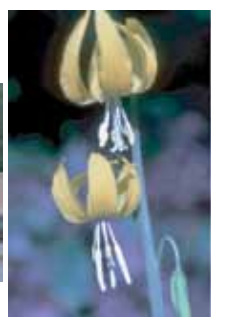
Crowsnest Pass Photo Exhibit

Allied Arts Building, 14737 - Hwy #3, Frank

Contact: Sacha Anderson, 403-562-8858

Enjoy spectacular photos of the Crowsnest Pass highlighting: History, Scenery, Wildlife, and Activities.

Cost: Free





SCHEDULE OF EVENTS *continued*

Saturday, July 31, 2010



Crowsnest Country Market

Flumerfelt Park, Coleman, Coleman Community Society

Open Air Market: 10:00 am - 4:00 pm

Live Auction: 11:00 am

Contact: 403-563-5408

colemancommunitysociety@shaw.ca

Baking, BC fruit, concession, crafts, farm eggs, farm fresh veggies, flea bargain tables, jewellery, jams, musical entertainment, and much more. Let the children enjoy the fun at the waterpark while you stroll through the many vendors' tables. This year will also be a celebration of the 100th anniversary of Flumerfelt Park.

Cost: Free Admission

Crowsnest Pottery Club

Coleman Sports Complex, 8702 - 22 Avenue, Coleman

9:00 am - 3:00 pm

Working kick wheel, information on the Club's history in the Crowsnest Pass and sale. The Pass Pottery Club is passionate about exploring the possibilities that working with clay has to offer. We create various types of pottery including functional, decorative pieces in all sizes and colors. Come and see what we can do with clay.

Cost: Free

Chinook Lake Information Session and Hike

Alberta Parks and Recreation

12:00 Noon - 2:00 pm

Contact: 403-562-3296

Enjoy this session hosted by conservation officer Tracy Ryan, on the beauty and history of the Chinook Lake area. Wear comfortable shoes as you will be doing some exploration of this beautiful area. Meet at the day use area for this program. For more information on this, please read the article on page 7.

Cost: Free



Teddy Bear's Picnic

Crowsnest Museum, 7701 - 18 Ave., Coleman

10:00 am - 4:00 pm

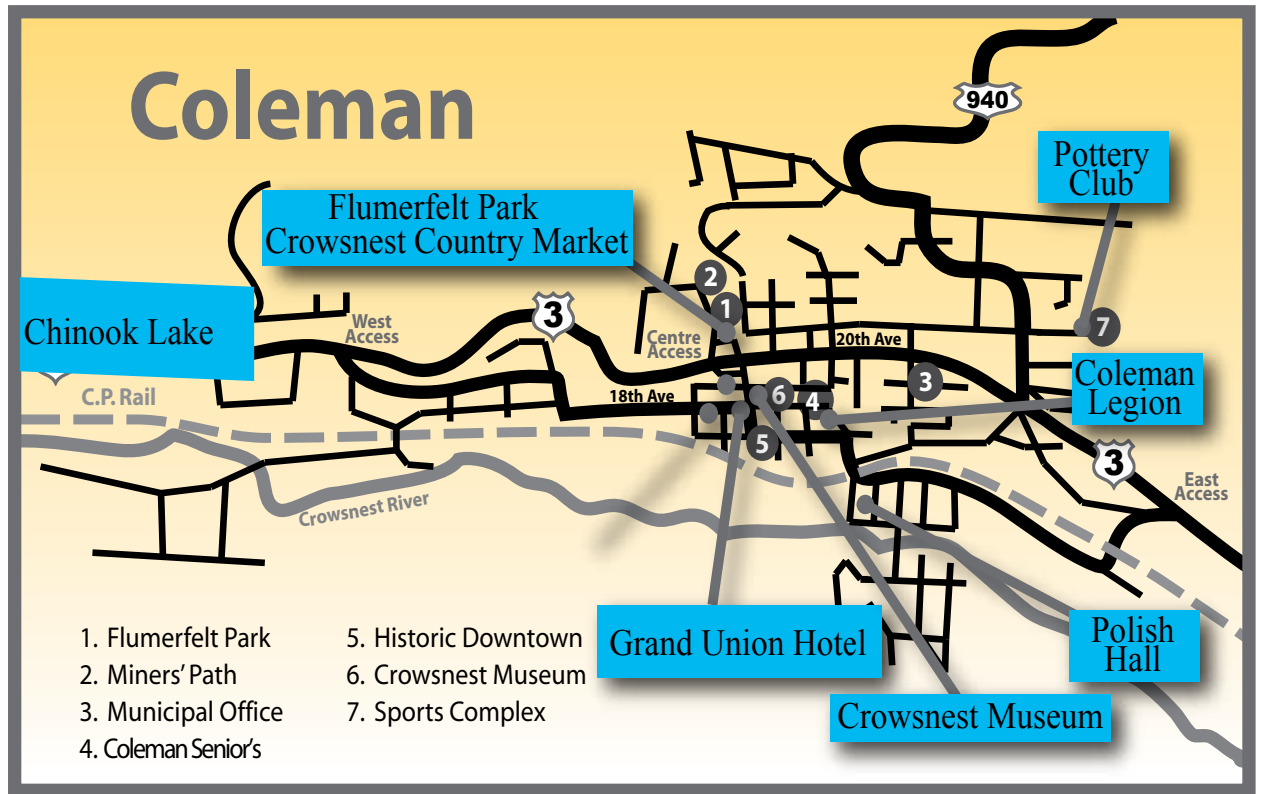
Contact: 403-563-5434

www.crowsnestmuseum.ca

Don't miss the 4th annual Teddy Bear's Picnic! Fun for the young and young at heart. Join us for old fashioned games, face painting, a Teddy Bear Adoption Centre, personalized photos, a Teddy Doctor station (with a real nurse and doctor), Ellie the clown and balloon artist Poppa Joe, just to name a few of the "bear necessities".

Cost: \$5.00 Teddy Bear entry registration

Concession available



Guided Walking Tours of Coleman

Crowsnest Museum, 7701 - 18 Ave, Coleman

Saturday and Sunday only

Departure times: 10:00 am & 4:00 pm

Contact: Crowsnest Museum: 403-563-5434

A camera is a must on this walking tour! Go back in time while you saunter the streets of downtown Coleman. Included in the tour are the International Coal and Coke mine office, the remains of the coke ovens, the history of the Italian Benevolent Society, secrets of the architecture of some of the buildings, learn about the famous



rum-runner Emperor Pic at the Alberta Provincial Police Barracks. Discover the overall uniqueness of this National Historic Site.

Cost: Free

Tour the Grand Union Hotel

7719 - 17 Ave., Coleman

10:00 am - 4:00 pm,

tours on the hour

Contact: 403-563-5227

Enjoy a guided tour through the historic Grand Union Hotel. Come back in the evening and enjoy a night of musical entertainment.

Cost: Free



Royal Canadian Legion, Coleman #9

7831 - 17 Ave., Coleman

10:00 am - 4:00 pm

Contact: 403-563-5480

branch9@shawbiz.ca

Alberta's oldest legion was established in October of 1926. The legion's cenotaph

honours WWI, WWII and Korean Veterans. The building is a designated Municipal Historic Resource.

Cost: Free



Mad Science presentation of FIRE & ICE

Frank Slide Interpretive Centre,

1.5 km off Hwy #3, Crowsnest Pass

3:00 pm - 4:00 pm

Contact: 403-562-7388

As part of our 25th anniversary we have invited back by popular demand, Parent's Choice Award Winner 'Mad Science.' Expose the science behind magic, help Eggbert get back into his home, create a Mad Science burp potion, a Mad Science bath and a Mad Science shower using Dry Ice and then end it all off with a HUGE fog.

Cost: admission to Centre

25th Anniversary Celebration - Frank Slide Interpretive Centre

Frank Slide interpretive Centre,

1.5 km off Hwy #3, Crowsnest Pass

10:00 am - 5:00 pm

Contact: 403-562-7388

Join us in celebrating 25 years in operation. Twenty-five of the best and most popular activities and programs that have been offered at the Centre will be happening over the weekend. For more information on this event please read the article on page 7.

Cost: outdoor activities are free - admission applies inside Centre

Cross-Country Ski Trail Guided Mountain Bike Tours

Cross Country Ski Club

2:00 - 3:00 pm

Contact: Henry 403-562-7388

Enjoy a guided mountain bike tour along the ski trails of the Chinook Lake area. Meet at the day use area with your mountain bike for a ride with spectacular views.

Cost: Free

Capture the Beauty of Crowsnest Pass: A Photography Excursion

Meet at Crowsnest Conservation Society, 12707-20th Ave., Blairmore

1:00 - 4:30 pm

Contact: 403-563-7545

birds@crowsnestconservation.ca

Tread Softly's Dave Welsh will lead an outing to photograph some of the spectacular landscapes of the Pass. We will drive to the Adanac Summit and hike the old mine road to the top of the ridge. The gentle route offers lots of opportunities to talk about techniques for capturing scenery and wildflowers. We will return to Blairmore via Sartoris Road, stopping to photograph scenery on the way. Bring: Camera you are comfortable using (or would like to learn more about), a tripod or monopod if you have one, water and snack. Wear: Sturdy shoes and clothing suitable for Pass weather. It may be windy on the ridge. Number of Participants: 10 - 15 Suitable for novice and experienced photographers.

Cost: Free, pre-register at the e-mail listed above.



Open House & Guided Tours - Rocky Summit Lodge #30

Masonic Hall, 14806 - 21 Ave, Frank

Noon - 2:00 pm

Contact: Bob Liddell 403-563-3130

Built as a Methodist church, and subsequently used as a Union Hall and a community hall this building now acts as the Masonic Hall. Tours will include the upstairs meeting room.

Cost: Free



SCHEDULE OF EVENTS *continued*

Sunday, August 1, 2010

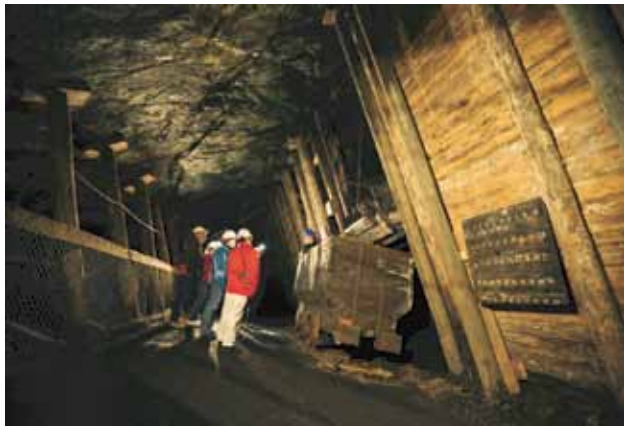
100th Anniversary of the 1910 Bellevue Mine Explosion

Bellevue Underground Mine
Access off Bellevue Main Street, 213 Street

1:00 pm
contact: 403-564-4700
cpets@shaw.ca
www.bellevueundergroundmine.org

Join us as we commemorate the 100th anniversary of the 1910 Bellevue Mine disaster that killed 31 men. Meet and learn the story first hand from the miners, mine manager, rescue dragermen and union bosses and other fascinating actor/ players as they share and debate their perspective of this tragic event. Take in the historic pictorial display, a mine lamp demonstration, a simulated mine explosion and a demonstration by a modern Teck Coal Mine Rescue team.

Cost: Free



Antique Appraisals with Sheldon Smithens of the Canadian Antique Roadshow

Bellevue Underground Mine
Access off Bellevue Main Street, 213 Street
Time: 10:00 am - 1:00 pm and 2:00 pm - 4:00 pm

Contact: 403-564-4700
cpets@shaw.ca

This is your opportunity to have your special items professionally appraised by Sheldon Smithens, as seen on the Canadian Antiques Road Show. Contact the numbers listed above to secure a spot with Sheldon.

Cost: \$10.00 per item

Bellecrest Quilters Fair

Bellevue Underground Mine Site,
Access off the Bellevue Main Street, 213 Street

10:00 am - 4:00 pm
Contact 403-564-4700 or 403-564-2371

Quilters will be selling their diverse creations: artistic or practical, large or small, plain or colorful. Come to admire their talent. Take a treasure home.

Cost: Free viewing



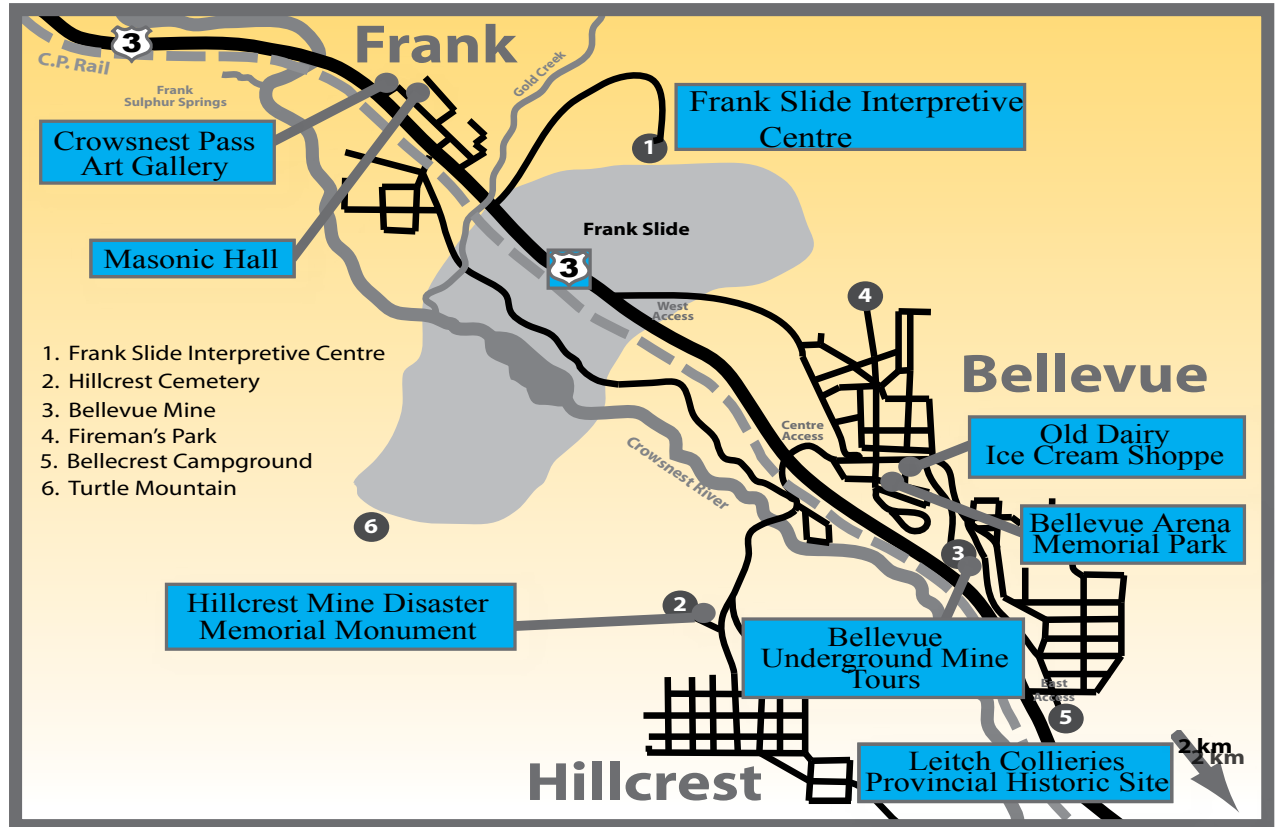
Guided Walking Tours of Coleman

Crowsnest Museum, 7701 - 18 Ave, Coleman
Saturday and Sunday only

Departure times: 10:00 am & 4:00 pm
Contact: Crowsnest Museum: 403-563-5434

A camera is a must on this walking tour! Go back in time while you saunter the streets of downtown Coleman. Included in the tour are the International Coal and Coke mine office, the remains of the coke ovens, the history of the Italian Benevolent Society, secrets of the architecture of some of the buildings, learn about the famous rum-runner Emperor Pic at the Alberta Provincial Police Barracks. Discover the overall uniqueness of this National Historic Site.

Cost: Free



Birding Walk on Miners' Path

Meet at Crowsnest Conservation Office,
12707-20th Ave., Blairmore

Tour Time: 6:00 pm - 8:00 pm
Contact: 403-563-7545

birds@crowsnestconservation.ca

Meet at the Crowsnest Conservation Office, 12707-20th Ave. in Blairmore at 5:30 pm and carpool to Coleman for a guided birding walk along the historic Miners' Path.



Bring binoculars if you have them, or borrow a pair from Crowsnest Conservation. Please come prepared for walking, bring water.

Cost: Free Maximum of 15 spots on a first come basis

25th Anniversary Celebration - Frank Slide Interpretive Centre

Frank Slide Interpretive Centre,
1.5 km off Hwy #3, Crowsnest Pass

10:00 am - 5:00 pm
Contact: 403-562-7388

Join us in celebrating 25 years in operation. Twenty-five of the best and most popular activities and programs that have been offered at the Centre will be happening over the weekend. For a complete schedule of activities please read the article on the 25th anniversary on page 7.

Cost: outdoor activities are free - admission to inside Centre



Guided Flower Walk

Frank Slide Interpretive Centre
1.5 km off Hwy #3, Crowsnest Pass

Departure Times: 11:00 am & 3:00 pm
Tour length: 1 hour

Contact: 403-562-7388

Join our knowledgeable interpreter for a guided walk through the beautiful area surrounding the Frank Slide Interpretive Centre and discover the beauty hidden within.

Cost: Free - Limit: 30 - first come basis

Turtle Mountain Monitoring Presentation

Frank Slide Interpretive Centre
1.5 km off Hwy #3, Crowsnest Pass

2:00 pm
Contact: 403-562-7388

Enjoy a special presentation by Corey Froese head of the Turtle Mountain Monitoring Team. If you are interested in the possibility of another slide, how the mountain is being monitored and the new equipment on the mountain, this is the presentation for you.

Cost: Admission to the Frank Slide Centre



Memorable Mine Ponies

Frank Slide Interpretive Centre,
1.5 kilometers off Hwy#3, Crowsnest Pass

12:00 Noon
Contact: 403-562-7388

Hey Kids, learn what it was like for the horses that worked in the underground mines. Bambi the Shetland pony will be on hand to demonstrate some of the things that were required of the horses in the coal mines.

Cost: Free

Science Alberta Interactive Exhibits

Frank Slide Interpretive Centre,
1.5 kilometers off Hwy#3, Crowsnest Pass

10:00 am - 5:00 pm, Fri. to Mon.
Contact: 403-562-7388

www.frankslide.com

As part of our special 25th anniversary we have three new hands-on exhibits from the Science Alberta Foundation.

Cost: Free

Movie by Starlight

Access off Bellevue Main Street
(213 Ave.) onto 25 Ave. behind the Wildrose Confectionary

8:00 pm gates open - movie to begin at dark

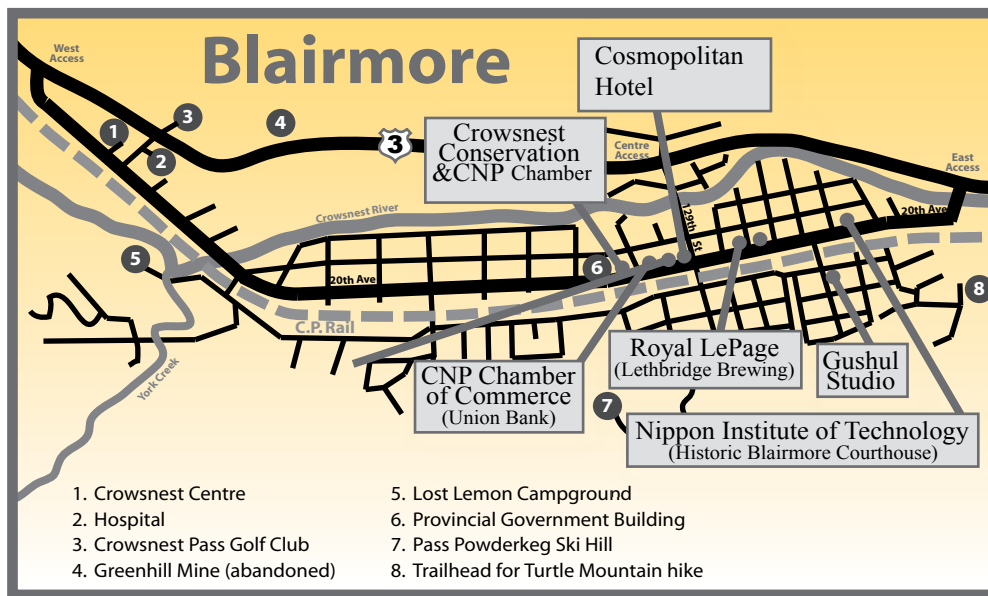
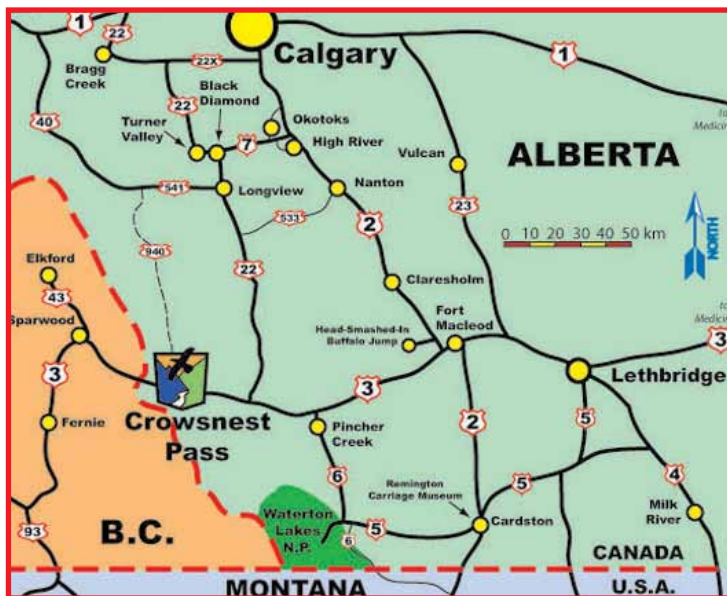
Bring your chairs and enjoy a movie under the starlight in the Bellevue Memorial Park.

Cost: Free





SCHEDULE OF EVENTS *continued*



Monday, August 2, 2010

The Gushul Studio and Cottage

13301 - 19th Avenue, Blairmore
Tours: 12:00 Noon - 2:00 pm
Contact: Rebecca Gray, 403-394-3997



The Gushul Studio and Cottage were opened in 1988 for professional artists interested in working in the Crowsnest Pass for one to three month residencies. The facilities were completely renovated by the Alberta Historical Resources Foundation in the early 1980s to acknowledge Thomas Gushul's and his son Evan's work as pioneering photographers of the region.
Cost: Free

Historic Crowsnest Pass Driving Tour

Frank Slide Interpretive Centre
1.5km off Hwy #3, Crowsnest Pass
Bus tour begins at the Frank Slide Interpretive Centre
Departure Times: 12:30 pm & 3:30 pm
Tour length: 1 - 1.5 hours
Contact: 403-562-7388

The tour departs from the site's parking lot. The tour will cover the communities of the Crowsnest Pass, highlighting the unique history and architecture of each community.

Cost: Free

Ride through the Slide - Driving Tour

Frank Slide Interpretive Centre
1.5km off Hwy #3, Crowsnest Pass
Bus tour begins at the Frank Slide Interpretive Centre
Departure times: 11:00 am and 2:00 pm
Tour length: 1 - 1.5 hours
Contact: 403-562-7388

This tour departs from the Frank Slide Interpretive Centre parking lot and follows along the old Frank Road. The tour will stop along the road to point out some of the significant features of Turtle Mountain and the Frank Slide and historical landmarks of the old town of Frank.

Cost: Free

Crowsnest Pass Doors Open & Heritage Festival: *Schedule at a Glance*

Friday, July 30	
10:00 am - 5:00 pm	25th Anniversary of the Frank Slide Interpretive Centre
10:00 am - 4:00 pm	Historic Blairmore Courthouse Guided Tours
1:00 - 4:00 pm	Historic Union Bank Tours- Crowsnest Pass Chamber of Commerce
1:00 - 4:00 pm	Lethbridge Brewing and Malting Company tour - Royal LePage Office
7:00 - 9:00 pm	Launch event - Polish Hall, guest speaker Dr. Laurel Halladay, entertainment and refreshments
Saturday, July 31	
9:00 am - 3:00 pm	Crowsnest Pass Pottery Club show and sale - Sports Complex
10:00 am - 4:00 pm	Crowsnest Country Market - Flumerfelt Park 100th anniversary
• 10:00 am - 4:00pm	• Open air market
• 11:00 am	• Auction
10:00 am - 4:00 pm	Teddy Bear's Picnic - Crowsnest Museum - \$5.00 admission
10:00 am - 4:00 pm	Guided Walking tours of Historic Coleman - meet at Crowsnest Museum
10:00 am - 4:00 pm	Grand Union Hotel guided historic tours (on the hour)
10:00 am - 4:00 pm	Royal Canadian Legion tours
10:00 am - 5:00 pm	25th Anniversary of the Frank Slide Interpretive Centre
12:00 noon - 2:00pm	Open House and Guided tour of Rocky Summit Lodge #30 - Frank
12:00 noon - 2:00 pm	Chinook Lake Information Session - meet at Day use area
1:00 - 4:30 pm	Capture the Beauty of the Crowsnest Pass Photo Excursion
1:00 - 4:00 pm	Historic Union Bank Tours- Crowsnest Pass Chamber of Commerce
1:00 - 4:00 pm	Lethbridge Brewing & Malting Company tour - Royal LePage Real Estate
2:00 pm - 3:00pm	Guided Mountain Bike Tours - Cross-Country Ski Club
Sunday, August 1	
10:00 am - 4:00 pm	Bellecrest Quilters Fair - Bellevue Underground Mine
10:00 am & 4:00 pm	Guided Walking tours of Historic Coleman - Crowsnest Museum
10:00 am - 5:00 pm	25th Anniversary of the Frank Slide Interpretive Centre
• 12 Noon	• Memorable Mine Ponies
• 11:00 am - 3:00 pm	• Guided Flower Walk (1 hour)
• 2:00 pm	• Turtle Mountain Monitoring Presentation
• 10:00 am - 5:00 pm	• Interpretive and audio-visual presentations, Science Alberta Exhibits

10:00 am - 5:30 pm	100th Anniversary Bellevue Mine Explosion - Bellevue Underground Mine
• 1:00 pm	• Miners' Memorial
• 10:00 am - 1:00 pm and 2:00pm - 4:00 pm	• Antique Appraisals with Sheldon Smithens
• 2:00 pm	• Mine Rescue Demonstration from Teck Coal Ltd.
• Throughout the day	• Safety Lamp Demonstration and Simulated Mine Explosion
	• Historic Mine Photo Display
	• Pulling the Pillars, an interactive program for children
6:00 pm - 8:00 pm	Birding Walk on Miners' Path - meet at Crowsnest Conservation Society Office
8:00 pm	Movie by Starlight - Bellevue Arena Memorial Park
Monday, August 2	
12:00 noon - 2:00 pm	Gushul Studio and Cottage Guided tour - Blairmore
10:00 am - 5:00 pm	25th Anniversary of the Frank Slide Interpretive Centre
11:00 am & 2:00 pm	Ride Through the Slide Driving Tours - from Frank Slide Centre (1-1.5 hours)
12:30 pm & 3:30pm	Historic Crowsnest Pass Driving Tour
Throughout the Weekend	
9:00 am - 5:00 pm	Crowsnest Museum - Coleman, closed on Monday
9:00 am - 5:00 pm	Hike the Historic Miners' Path
10:00 am - 4:00 pm, Fri. & Sat. & 1:00 - 4:00 pm, Sun. & Mon.	Crowsnest Pass Art Gallery Exhibit, Photography Exhibit and Frank Historic Walking Tour - Allied Arts Building
10:00 am - 5:30 pm	Bellevue Underground Mine Tours - 1st tour: 10:00 am, last: 5:30 pm
10:00 am - 5:30 pm	Holy Ghost Church historic tour - Blackbird Coffee House in Coleman
10:00 am - 5:00 pm	25th Anniversary of the Frank Slide Interpretive Centre
11:00 am - 10:00 pm	Historic Blairmore Walking tours
11:00 am - 2:00 pm	Guided tours of Leitch Collieries Provincial Historic Site
12:00 Noon - 10:00 pm	Historic Bellevue Walking Tours/Photo Exhibit
12:00 Noon - 9:00 pm, Fri., Sun. & Mon. & 7:00 pm - 9 pm, Sat.	Crowsline Art Studio and Birdhouse Walkway



Frank Slide Interpretive Centre 25th Anniversary

Join us in a celebration of the 25th Anniversary of the opening of the Frank Slide Interpretive Centre. Throughout the Doors Open and Heritage Festival weekend we will be highlighting 25 of the best activities offered at the Frank Slide Centre over the years.

Throughout the weekend you can enjoy our two award-winning audio visuals, as well as special showings of “Disasters of the Century”, as seen on the History Channel. Take in the most popular interpretive programs that have been offered over the years. If you are interested in the future of Turtle Mountain, join Corey Froese, head of the Turtle Mountain Monitoring team for a special presentation on the monitoring and future possibility of a slide from Turtle Mountain. Learn about the role horses played in underground mining with our interpreter Kate and her Shetland pony, Bambi. Enjoy the brand new Science Alberta exhibits, “Flight of the Kelvin’s”, “Reaction Action” and “Fission Impossible.”

Throughout the weekend there will be guided hikes along the Frank Slide Trail, flower walks, guided bus tours and much more. Enjoy our newly renovated, interactive exhibits and displays. Bring the family and enjoy all that the Frank Slide Interpretive Centre has to offer.

FOR MORE INFORMATION VISIT: www.frankslide.com



Chinook Lake Provincial Recreation Area

Chinook Lake Provincial Recreation Area, set in a spectacular mountain setting, has been a popular destination for local residents and visitors to the Crowsnest Pass for over 100 years.

It is located below Crowsnest Mountain, named by the Cree Indians for the ravens which nested in the area, however an improper translation made the name of the mountain Crowsnest instead of Ravensnest.

Chinook Lake PRA offers a wide range of recreational opportunities, including: fishing, swimming, hiking, canoeing, cross-country skiing, camping and mountain biking. A leisurely stroll along the loop trail around Chinook Lake provides views of Mount Tecumseh and Crowsnest Mountain, offering wonderful photo opportunities. Although just a short stroll, look for signs of wildlife activity. Chinook Lake PRA is frequented by many wildlife species, including: black bears, grizzly bears, deer and even the occasional cougar.

Along the access road to the recreation area is the Allison Creek Trout Hatchery, a provincial government facility for the breeding and stocking of Brook Trout, Brown Trout and Rainbow Trout where eggs and trout fingerlings contribute to the provincial fish stocking program.

Learn about the rich history of the area ranging from the first documented human presence around 11,000 years B.C. to the development of lumber mills and coal mines providing economic stability and the development of the Crowsnest Pass. Whether you are planning a day trip or spending a few nights camping with family and friends, Chinook Lake PRA is an ideal destination for those wishing to experience a relaxing getaway or for those a little more adventurous.

For more information on the Chinook Lake PRA, join in on the information session being offered on Saturday, July 31, from 12:00 Noon - 2:00 pm. Meet with conservation officer Tracy Ryan at the Day Use Area.

For further exploration of this beautiful mountain region, join in a guided mountain bike ride along the cross-country ski trails throughout the Chinook Lake area. Members of the cross-country ski club will meet you at the Day Use Area at 2:00 pm for a one hour ride through the area. Contact information for these sessions is listed on the Saturday schedule of events.

Flumerfelt Park Turns 100

Mr. Alfred Cornelius Flumerfelt, a financier from Victoria, BC became the head of the International Coal and Coke Company, a company formed by a group who met in Spokane, WA, USA in 1902. Mr. Flumerfelt donated the land where Flumerfelt Park is today to the town of Coleman to be used for recreational purposes. The town of Coleman was named after his youngest daughter; Norma Coleman Flumerfelt.

Over the years the park has been redesigned into a wonderful recreational area. Flumerfelt Park is the starting point for several historic walks around the area of Coleman, Crowsnest

Pass. Families can spend the day at the park enjoying such amenities as: the waterpark, playground, historic walks, outdoor volleyball court, tennis court, picnic shelter and tables, the world’s biggest Piggy Bank and bathroom facilities. It is a short walk to the Crowsnest Museum and historic downtown Coleman and Coleman National Historic Site.

Join in on the centennial celebration of this wonderful and historic park during the Crowsnest Country Market, taking place on Saturday, July 31, from 10:00 am – 4:00 pm.



Enter to win a fantastic "Crowsnest Getaway Package"

Annual Family Pass to Alberta's Historic Sites and Museums

Donated by the Frank Slide Interpretive Centre
www.frankslide.com

Family Pass to the Bellevue Underground Mine

Donated by the Crowsnest Pass Ecomuseum Trust Society
www.bellevueundergroundmine.org

Two night stay at Ladybug Villa Holiday Home

Donated by Turtleback Holiday Home
www.turtlebackcottageholidayhome.com/2ndhomeladybugvilla
To book your special holiday, phone 403-562-7753

Stone's Throw Cafe - \$25 Gift Coin

Come on into our mountain café, located in the heart of Blairmore, Alberta. The Stone's Throw is your home for good eats, coffee and fun.
www.stonethrowcafe.ca
403-562-2230

Side Street Stylz's Hair Salon - Gift Basket

Main Street, Blairmore
403-562-8875

Family Pass to the Crowsnest Museum

Donated by the Crowsnest Historical Society
www.crowsnestmuseum.ca

Pure Country Saloon - Dinner for Two

Pure Country Saloon takes you back to the wild west in its decor, and the smorg's are excellent. Sit by the fireplace or try a game of pool. Watch the game or play the VLT's. From time to time the stage is set for entertainment and the Saloon will "Rock".
403-562-2992

Crowsnest Pass Golf and Country Club - 18 Holes for two with Cart

Located right in the heart of the Crowsnest Pass, with spectacular mountain views on all sides CNPGCC is one of the most spectacular courses in south western Alberta.
www.crowsnestpassgolf.com 403-562-2776

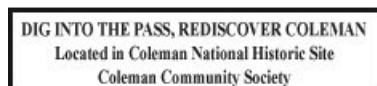
Popiel's Family Restaurant - Gift Certificate

Hwy #3 Coleman, Crowsnest Pass,
403-563-5555

Mountain Adventure Guiding - Guided Tour

403-562-7273
Amanda@treadsoftlycanada.ca

Entry forms for the "Crowsnest Getaway Package" can be picked up and dropped off at the Bellevue Underground Mine, Leitch Collieries Historic Site, Crowsnest Museum or Crowsnest Country Market. In order to enter the draw, your entry form must have a stamp or signature, from at least five weekend activities.



Crowsnest Pass Doors Open & Heritage Festival Partners and Sponsors

Frank Slide Interpretive Centre, Crowsnest Museum, Crowsnest Historical Society, Crowsnest Pass Ecomuseum Trust & Bellevue Underground Mine, Hillcrest Mine Disaster Memorial Committee, Crowsnest Pass Pottery Club, Old Dairy Ice Cream Shoppe, Gushul Studio and Cottage, Crowsnest Pass Public Art Gallery & Allied Arts Association, Bellecrest Community Association, Royal Canadian Legion-Coleman #9, Coleman Community Society, Crowsnest Conservation Society, Alberta Tourism, Parks and Recreation, Royal LePage Real Estate, Crowsnest Country Market, Alberta Culture and Community Spirit, Community Futures Crowsnest Pass, Municipality of the Crowsnest Pass, Rocky Summit Lodge #30, Crowsnest Pass Chamber of Commerce, The Crowline Art Studio, Polish Hall Society, Blackbird Coffee House, Grand Union Hotel, Cross-Country Ski Club, Bellecrest Quilters, Bellevue Arena Memorial Park, NIT Intercultural Campus, Cosmopolitan Hotel.

The Crowsnest Pass Doors Open & Heritage Festival Committee thanks all those who donated to the Getaway Package.